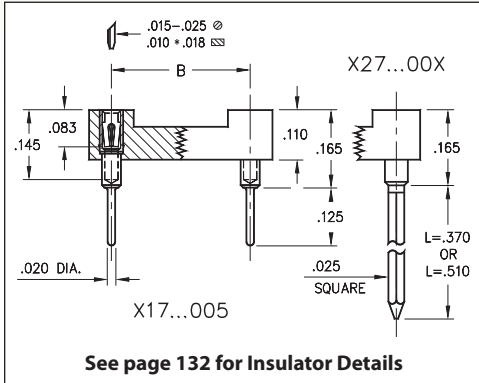
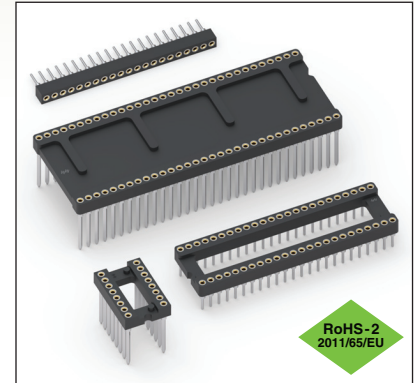


# DUAL-IN-LINE SOCKETS

**SERIES 117, 127, 217, 227, 317, 327 • SHRINK DIP, SOLDER TAIL & WRAPOST**



- High density DIP sockets and strips for devices featuring .070" lead spacing
- Solder tails use MM #1802 receptacles, See page 169 for details. Wraposts use MM #1702-2 or 1703-3 receptacles, See page 198 for details
- Hi-Rel, 4-finger BeCu #30 contact is rated at 3 amps. See page 253 for details
- Insulators are high temperature thermoplastic, suitable for all soldering operations
- For Electrical, Mechanical and Environmental Data, see page 264 for details



Total number of pins				Quantity per tube	ORDERING INFORMATION							
	A	B	C		Solder Tail	L = .370 (2 Level Wrapost)	L = .510 (3 Level Wrapost)					
<b>OPEN FRAME DIP SOCKET</b>												
16	0.572	0.3	0.39	35	117-XX-316-41-005000	127-XX-316-41-002000	127-XX-316-41-003000					
28	0.992	0.4	0.49	20	117-XX-428-41-005000	127-XX-428-41-002000	127-XX-428-41-003000					
30	1.062	0.4	0.49	18	117-XX-430-41-005000	127-XX-430-41-002000	127-XX-430-41-003000					
48	1.692	0.4	0.49	12	117-XX-448-41-005000	127-XX-448-41-002000	127-XX-448-41-003000					
20	0.712	0.6	0.69	28	117-XX-620-41-005000	127-XX-620-41-002000	127-XX-620-41-003000					
28	0.992	0.6	0.69	20	117-XX-628-41-005000	127-XX-628-41-002000	127-XX-628-41-003000					
40	1.412	0.6	0.69	14	117-XX-640-41-005000	127-XX-640-41-002000	127-XX-640-41-003000					
42	1.482	0.6	0.69	13	117-XX-642-41-005000	127-XX-642-41-002000	127-XX-642-41-003000					
48	1.692	0.6	0.69	11	117-XX-648-41-005000	127-XX-648-41-002000	127-XX-648-41-003000					
52	1.832	0.6	0.69	11	117-XX-652-41-005000	127-XX-652-41-002000	127-XX-652-41-003000					
56	1.972	0.6	0.69	10	117-XX-656-41-005000	127-XX-656-41-002000	127-XX-656-41-003000					
64	2.252	0.6	0.69	8	117-XX-664-41-005000	127-XX-664-41-002000	127-XX-664-41-003000					
68	2.392	0.6	0.69	8	117-XX-668-41-005000	127-XX-668-41-002000	127-XX-668-41-003000					
64	2.252	0.75	0.84	8	117-XX-764-41-005000	127-XX-764-41-002000	127-XX-764-41-003000					
<b>CLOSED FRAME DIP SOCKET</b>												
64	2.252	0.75	0.84	8	217-XX-764-41-005000	227-XX-764-41-002000	227-XX-764-41-003000					
					<b>SINGLE ROW STRIP SOCKET</b>							
If desired, we will supply any length up to 21 pins.												
21	1.482	---	.104	-	317-XX-121-41-005000	327-XX-121-41-002000	327-XX-121-41-003000					
<b>XX=Plating Code See to Right</b>					<b>SPECIFY PLATING CODE XX=</b>			91	93	41 ◆	43 ◆	47 ◆
					Sleeve (Pin)	200 μ" Sn/Pb	200 μ" Sn/Pb	200 μ" Sn	200 μ" Sn	200 μ" Sn		
					Contact (Clip)	10 μ" Au	30 μ" Au	10 μ" Au	30 μ" Au	Au Flash		

